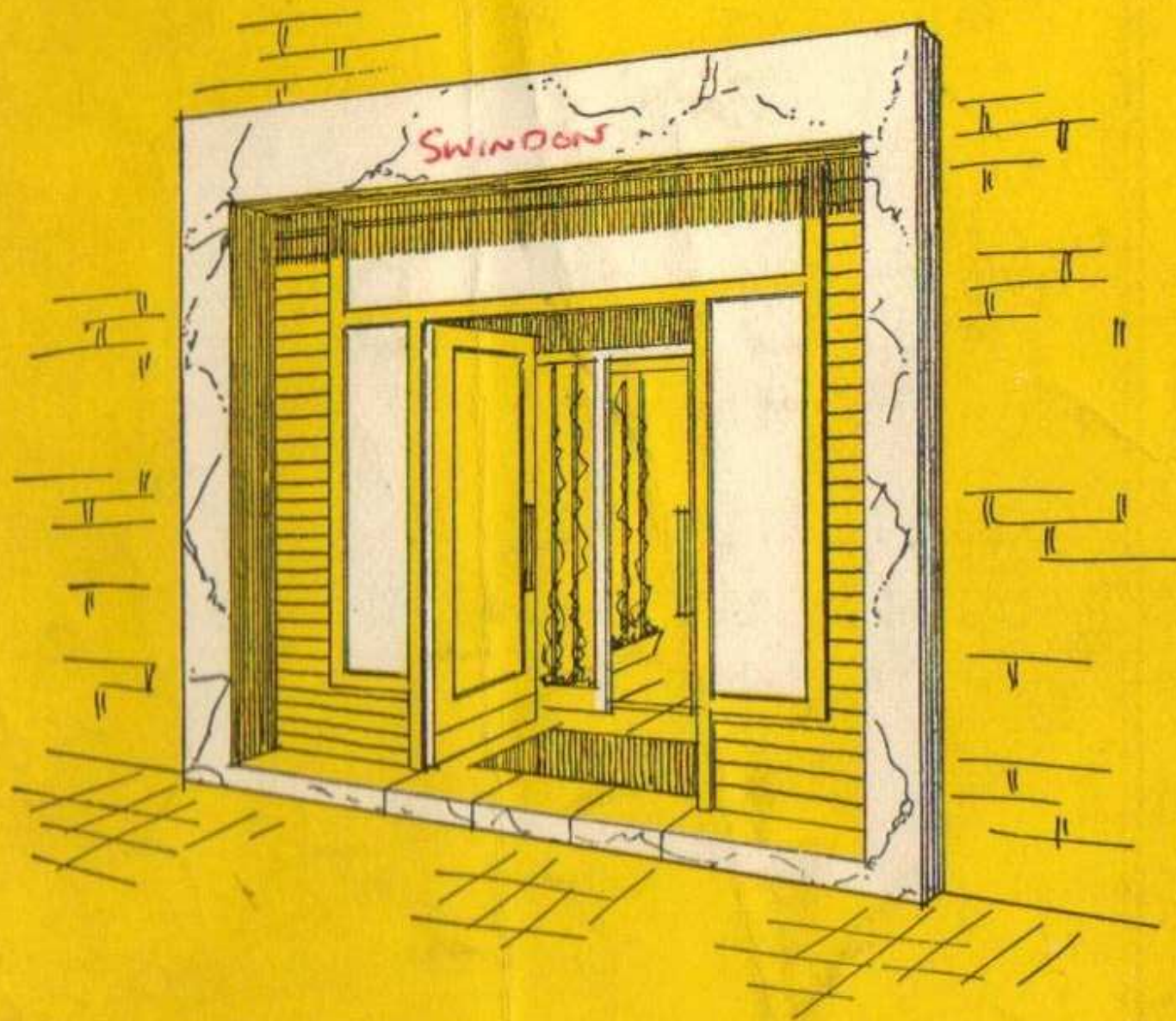
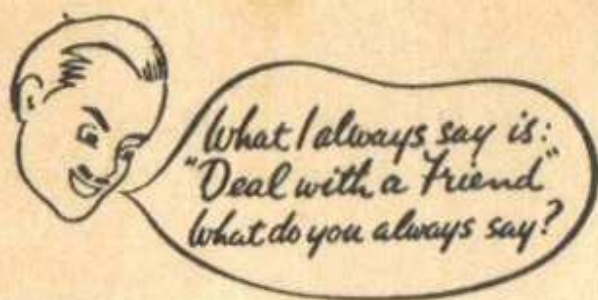


CRYSTAL PALACE

Football & Athletic Club



Official Programme 4d.



FRANK
DOUGLAS

AND COMPANY LIMITED

33/37, PORTLAND ROAD,
SOUTH NORWOOD, S.E.25
& BRANCHES



Tel. ADDiscombe 2235/7

THE CRYSTAL PALACE FOOTBALL CLUB LIMITED

DIRECTORS :

V. A. ERCOLANI, (Chairman)

R. SHRAGER, (Vice-Chairman)

A. J. WAIT

J. R. DUNSTER

Secretary-Manager : CYRIL SPIERS

Trainer : J. BLACKMAN

Medical Officer : P. SOMMERVILLE, M.B., Ch.B.

Asst. Trainer : T. BROLLY

No. 7

Saturday, 12th October, 1957

Crystal Palace v. Swindon

Kick-Off 3.15 p.m.

FUTURE HOME FIXTURES

MONDAY, 14th OCTOBER

FLOODLIGHT - FRIENDLY

CRYSTAL PALACE

v.

WYCOMBE WANDERERS

KICK-OFF 7.30 P.M.

WEDNESDAY, 16th OCTOBER

London Mid-Week League

CRYSTAL PALACE 'A'

v.

PORTSMOUTH 'A'

KICK-OFF 3.0 P.M.

The new roofs to the Stands

have been carried out by:—

ROBERTS & BURLING LTD.

Roofing Contractors

10 Whitehorse Rd.
Croydon

Tel. THO 1253/5



WOLF CUB Electric Drill

This wonderful Electric Drill is also the Power Unit for all Cub equipment. Drilling capacity Mild Steel $\frac{1}{4}$ in. Hardwood $\frac{1}{2}$ in. complete with $\frac{1}{4}$ in. three Jaw Chuck, Allen Key & 5 ft. Cable.

£6 - 12 - 6

HAMMOND & HUSSEY LTD.

High St. Croydon CRO 2773
Est. 1769

CLUB NOTES *by Cyril Spiers*

The improved form shown in recent away games at Shrewsbury and Torquay was bound to make us feel that our first away win was in the offing. Very few people, however, thought that Northampton of all teams would be the first to provide us with that win. Northampton have always been looked upon as our bogey team, for we had not won on the Cobblers' ground for the last 27 years. Northampton in their two previous games had gained grand victories against Colchester and at Watford, so although they occupy a lowly position in the League Table it was no mean performance by our boys to beat them by two goals to one.

Honours in the first half I would say were about even. Northampton appeared to have a couple of scoring chances but they were by no means easy. Both were missed, much to the chagrin of the home supporters who, I thought, were not too kind to their own players. In both instances the Northampton players had to make their effort too quickly, and I give credit for this to our alert defence. No more chances came their way. Two good efforts were made by our boys—one nearly caused the centre half back to put through his own goal and the other hit the post. All things considered, no score at half time was about a true reflection of the play.

The second half was definitely ours, for right from the off our boys gained the initiative and never let go. Rarely did Northampton threaten our goal. It was no surprise when George Cooper opened our account with a good header which gave Elvy no chance of saving. George made his tally two when he scored our second goal with an unstoppable right-foot shot. This goal came about ten minutes before the end.

The game was virtually over when Northampton gained slight compensation by a penalty goal. In fact, it was during the extra time allowed for stoppages when the award was given. No sooner had the centre been taken when the final whistle blew. The boys tramped off the field happy to have broken the long run of successes by the Cobblers and to have gained our first away win of the season.

Well done, lads ; this was a grand win and thoroughly deserved. Keep up the good work !

The Reserve team slipped back a bit, losing by three goals to one against a strong Birmingham side. This was a well-contested game, and I am told that a draw would have been a much fairer result. Birmingham gained a two-goal lead in the first half and were slightly the better side. The second half saw our lads flat out to wipe off the arrears. Ray Farrell pegged one back before Birmingham settled the issue with a rather lucky third goal.

On Monday evening the Reserves had a ding-dong affair in the First Round of the London Challenge Cup against Brentford. Nearly 5,000 saw our boys play some grand football in the first 45 minutes. Our reward should have been far greater than the one goal scored by Jim Murray. Ray Farrell had real tough luck not to have had two or three goals to his credit this half. His great, hearty play deserved some reward.

In the second half our boys were not so good and it became Brentford's turn to monopolise the play. Their equalising goal was a tragedy. Alf Noakes found himself on the goal line with the ball stuck in between his feet, and in his anxiety to get the ball away, inadvertently pushed it over the line. Extra time was played but there was no further scoring, and so we continue the contest at Brentford on Tuesday next, kick-off 7.30 p.m.

The Juniors made a draw of three goals each against Queen's Park Rangers, Colin Shone scoring all three goals.

On Monday evening we play our full First Team against the famous Amateurs from Wycombe. You will recall that both Terry Long and Geoff Truett came to us from the Wanderers. This game is given to Wycombe in appreciation of their helpful co-operation. Do come along at 7.30 p.m. on Monday and help to make this a bumper gate for the Amateurs.

On Tuesday, 22nd October, we play at Watford in the First Round of the Southern Floodlight Challenge Cup. This is the third year of the Competition and we have yet to be drawn at home. Last season it was Arsenal away and the season before West Ham. Let's hope we can get through this Round and maybe draw Arsenal or Chelsea at home in the next Round.

Wednesday, 30th October, is the big day for the Third Divisions—South v. North—at Selhurst Park. If you have not already done so, book your seats for the Centre Stand now and make sure.. Usual League prices. Wing Stand, Enclosure and Ground will be pay at the turnstile.

I have been asked to draw your attention to the Inter-Cities Semi-Final second leg game between London and Lausanne. This game will be played at Arsenal Stadium on 23rd October. To reach the Final London must win by two clear goals.

Our Visitors . . .

SWINDON

Brief History of the Club.—Formed 1893, became professional Club 1897. Entered Southern League and were members until 1920. Entered Football League Division III (South) in that year and have been members of the Division since.

Club Honours.—Twice reached the semi-Final of F.A. Cup.

Pen Pictures of the Team

BURTON, Sam. *Goal.* Joined the Club in 1946 from local football. Born Swindon. Height 6ft. 1in. ; weight 13st. 2lb.

NEAL, John. *Right Back.* New signing this year from Hull City. Formerly with Kings Lynn. Born Newcastle. Height 5ft. 7in. ; weight 10st. 11lb.

LEE, Jimmy. *Left Back.* Signed December, 1957, from Leyton Orient. Former Clubs : Blackburn and Notts. Forest. Height 5ft. 11in. ; weight 12st. 6 lb.

CLAYTON, Lew. *Right Half.* Signed this year from Bournemouth. Was a member of that Club's great Cup team last year. Height 5ft. 8in. ; weight 11st. 1 lb.. Born Barnsley.

HUDSON, George. *Centre Half.* Joined the Club in 1948 from Portsmouth. Born Havant, Hants. Height 6ft. 2in. ; weight 14st.

MCDONALD, Gordon. *Left Half.* Needs no introduction : was a member of Crystal Palace last season.

SKULL, John. *Outside Right.* Swindon-born player who joined the Club this season from Wolves. Height 5ft. 10in. ; weight 11st.

OWEN, Maurice. *Inside Right.* Born near Swindon. He joined the Club in 1947, and has since refused many chances to join First Division Clubs. Height 5ft. 9in. ; weight 11st. 2lb.

MICKLEWRIGHT, Andy. *Centre Forward.* A strong player, he was signed in 1955 from Bristol City. Born Birmingham. Height 5ft. 9in. ; weight 11st. 3lb.

EDWARDS, Bob. *Inside Left.* Secured from Chelsea, 1955, he was last season's top scorer with 26 goals. Born Guildford.

D'ARCY, Arnold. *Outside Left.* Signed from Wigan Athletic last year. He played with Accrington Stanley as an amateur. Born Blackburn. Height 5ft. 8in. ; weight 10st. 12lb.

GOING UP THIS SEASON ?

COAL & COKE

**PRICES WILL BE — SOON
FILL YOUR STORE NOW**

HALL & CO., LTD.

VICTORIA WHARF · CROYDON

Telephone CROydon 4444

HALF-TIME SCOREBOARD

A	Chelsea.....	v. Aston Villa.....
B	Tottenham	v. Arsenal.....
C	Charlton	v. West Ham
D	Leyton Orient.....	v. Barnsley
E	Middlesbrough.....	v. Fulham.....
F	Bournemouth	v. Southend
G	Brentford	v. Gillingham
H	Coventry	v. Southampton
J	Northampton	v. Plymouth.....
K	Norwich	v. Q.P.R.
L	Reading.....	v. Port Vale.....
M	Torquay	v. Millwall
N	Walsall	v. Brighton
P	Watford	v. Aldershot

WOODSIDE COACHES

Proprietor : T. J. HUTCHINSON

**ANY
TIME**



**ANY
WHERE**

FOR YOUR COMFORT & PLEASURE

RING : ADD 2180 and 7607

WALTER S. FRY, LTD.

**Softwood, Hardwood, Plywood,
Wallboard and Door Importers
Extensive Moulding and Sawmills**

**WOOD BLOCK AND PARQUET FLOORING SPECIALISTS
LARGE STOCKS AVAILABLE IN OUR RETAIL YARD**

**Any quantity of Timber, Plywood, Hardboard,
Lacnite cut to Customers requirements**

WE OFFER A FIRST RATE DELIVERY SERVICE

175 WINDMILL ROAD, CROYDON

Tel.: THO 5622

football fans

read **NEWS** OF THE **WORLD**



expert reports

CRYSTAL PALACE

Colours: White with Claret and Blue Facings
Black Shorts

Vic Rouse

²
Jack Edwards

200/46
~~Jimmy Belcher~~

⁷
Bernard Harrison

⁸
George Cooper

⁵
Arthur Proudler

¹⁰
Mike Deakin

³
Roy Greenwood

116/200
~~Terry Long~~

¹¹
Barry Pierce

Johnnie Byrne

Referee :

A. E. Moore

Linesmen :

E. W. Herridge

(Red Flag)



(Surrey)



D. L. Haynes
(Yellow Flag)

Kick-Off 3.15 p.m.

11	10	9	8	7
Darcy	Edwards	Micklewright	Owen	Skull
6		5		4
McDonald		Hudson		Clayton
3			2	
Lee			Neal	
		Burton		

SWINDON

Colours: Red and White



Don't Look Over His Shoulder

BUY A PROGRAMME



Introducing . . .

BARRY PIERCE

Age 22 years. Height 5ft. 9½in. Weight 11st 2lb.

Barry's birthplace and home town is Liverpool. He attended the Florence Melby Secondary Modern School and was a regular member of the team.

He played in several trial games for the Town team but was considered too small. After leaving school he played for a local Amateur team and at 15 years of age he was invited and played in several minor games for Stockport County. The following season he signed Amateur forms for New Brighton but only stayed with them for one season.

Barry was called up for National Service when 18 years old and joined the R.A.F. It was whilst serving in the R.A.F. that he became an Everton Amateur. Being posted to Cornwall he assisted Truro City in the Western League.

It was during his time with Truro that we became interested in him and he was signed on Amateur forms, signing professional for us on the day he was demobbed.

One game that sticks out in Barry's memory is the replay Cup Tie against Brentford last season. You will remember he scored all three of our goals and so putting us in the Third Round, the first time for many years.

ENGLAND v. ROUMANIA (Under 23)

After Young England's fine display against Bulgaria last month, you will be wanting to see the "Under 23" XI in action again, so make a note of Wednesday, 16th October, when they play Roumania under the Wembley floodlights. The kick-off is at 7.30 p.m. and applications for tickets should be sent at once to :—

Box Office, Empire Stadium, Wembley, Middlesex.
Prices are : 25s., 15s., 10s., 7s. 6d. and 3s.

Stanley Matthews

FOOTBALL BOOTS

*They're Lightweight! They're Streamlined,
They're Special!*

Lighter even than the "Continental" models,
these Football Boots designed on ideas by
STANLEY MATTHEWS will make a
power of difference to your game.

Stanley Matthews football boots
24/9 to 39/11 according to size.
Other streamlined models from
49/11. Boys models from 22/6.



SOUTH SUBURBAN CO-OPERATIVE SOCIETY LTD.

Regd. Office: 99 London Road, Croydon

TELEPHONE: CROYDON 3182-3

ANDRESS PRINTING CO.,
LTD.

Commercial Printers

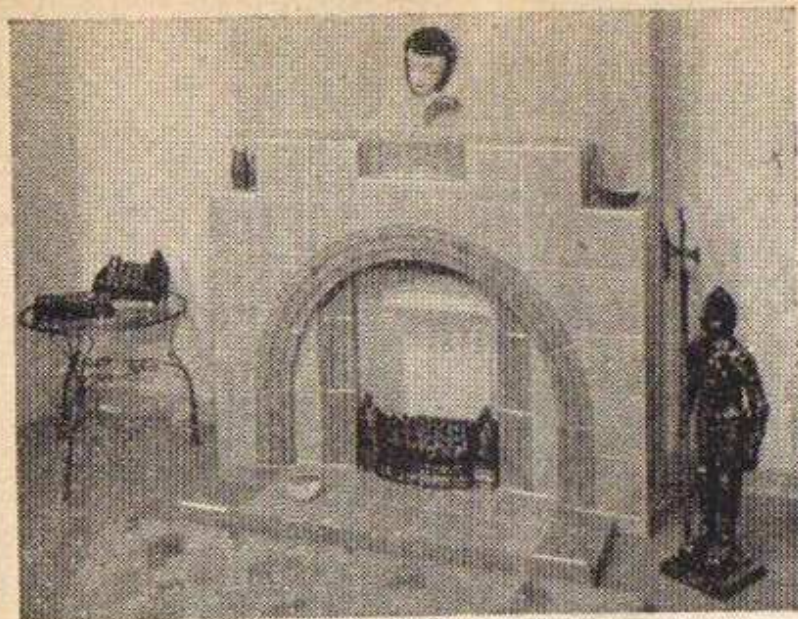
91-93 WADDON NEW ROAD
CROYDON, SURREY

LEAGUE III SOUTH

	Home				Away				Goals		Pt.
	P	W	D	L	P	W	D	L	For	Ag.	
Swindon ...	14	5	1	0	2	1	4	26	15	17	
Brighton	13	4	1	2	4	0	2	24	21	17	
Plymouth	14	6	1	0	2	0	5	20	13	17	
Norwich	13	3	2	1	3	2	2	21	20	16	
Port Vale	12	4	2	0	2	1	3	19	9	15	
Southampton	14	5	0	3	1	2	3	34	24	14	
Watford ...	13	3	2	1	1	4	2	16	12	14	
Brentford	13	3	2	1	3	0	4	29	23	14	
Reading ...	12	3	2	2	3	1	2	23	14	13	
Southend	13	3	1	3	3	0	3	31	19	13	
Millwall ...	13	4	1	2	2	0	4	22	19	13	
Bournemouth	13	3	2	1	2	1	4	21	24	13	
C. Palace	13	3	2	1	1	2	4	17	17	12	
Newport	12	2	2	1	2	2	3	15	20	12	
Shrewsbury	13	3	2	2	1	2	3	11	17	12	
Q.P.Rangers	13	5	1	1	0	1	5	12	24	12	
Colchester	14	3	1	2	1	3	4	18	27	12	
Northampton	14	3	1	2	1	2	5	21	13	11	
Walsall ...	11	4	1	1	0	2	3	14	16	11	
Coventry	11	3	1	2	1	2	2	12	17	11	
Gillingham	13	4	1	2	1	0	5	14	20	11	
Aldershot	13	2	1	3	2	2	3	14	21	11	
Exeter ...	13	3	1	3	0	3	3	15	23	10	
Torquay ...	13	3	2	1	0	1	6	10	18	9	

FOOTBALL COMBINATION

Goals								
	P	W	D	L	For	Ag.	Pt.	
Chelsea	11	9	1	1	43	8	19	
Tottenham	11	7	3	1	27	9	17	
Ipswich	10	6	3	1	27	15	15	
West Ham	9	5	3	1	14	9	13	
Bristol City	11	6	1	4	19	17	13	
Leicester	10	5	2	3	26	17	12	
Portsmouth	11	5	2	4	22	15	12	
Leyton O.	10	5	1	4	21	15	11	
Fulham	9	5	1	3	22	16	11	
Charlton	9	4	3	2	26	19	11	
Luton	11	5	1	5	21	22	11	
Brentford	10	4	3	3	17	19	11	
Norwich	11	5	1	5	23	30	11	
Bristol Rovers	11	4	3	4	12	17	11	
Cardiff	10	4	3	3	14	20	11	
Millwall	11	4	3	4	21	30	11	
Birmingham	10	4	2	4	19	15	10	
Swansea	10	4	2	4	14	17	10	
Crystal Pal.	9	3	3	3	19	19	9	
Arsenal	10	3	3	4	19	19	9	
Swindon	10	4	1	5	14	14	9	
Watford	9	3	2	4	14	14	8	
Southend	10	3	2	5	15	17	8	
Reading	9	3	1	5	13	20	7	
Brighton	10	3	1	6	8	13	7	
Plymouth	11	3	1	7	17	28	7	
Southampton	10	2	2	6	20	23	6	
Q.P. Rangers	9	3	0	6	18	25	6	
Bournemouth	10	2	2	6	19	30	6	
Northampton	9	1	4	4	15	25	6	
Coventry	9	0	6	3	6	11	6	
Aldershot	10	2	2	6	6	23	6	



*When you are
re-decorating*

Fit a

HEATH
Fireplace

*It makes all
the difference !*

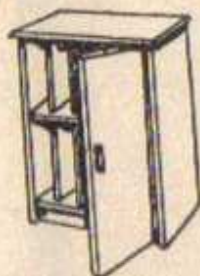
The HEATH FIREPLACE (Croydon) Ltd.

VISIT OUR SHOWROOMS
42 HIGH STREET CROYDON HEATH WORKS, HACKBRIDGE
EASY TERMS AVAILABLE

"TWICE AS NICE AT HALF THE PRICE"

**60 ARTICLES YOU CAN
MAKE WITH**

WREN CRAFT



**BOOKCASES, WRITING BUREAUX,
BEDROOM SUITES, Needlework Cabinets,
Tea and Coffee Trolleys, Record Cabinets, etc.**

All the parts are made. You simply glue and press together—No Tools
or mess. Guaranteed. **YOU SAVE POUNDS !**

FREE !

Send for the **FREE** catalogue to **WREN CRAFT
FURNITURE, LTD., Wellington Crescent. New
Malden, Surrey.**

FIRST TEAM FIXTURES

1957	Opponents	Result
S., Aug. 24	Norwich C. A.	L 2-3
W., " 28	Millwall H.	L 0-1
S., " 31	Bournem'th H.	W 3-0
M., Sept. 2	Millwall A.	L 0-3
S., " 7	Walsall A.	L 1-2
W., " 11	Gillingham H.	W 3-0
S., " 14	Coventry C. H.	W 2-0
W., " 18	Gillingham A.	L 0-3
S., " 21	Shrewsbury A.	D 0-0
W., " 25	Torquay U. A.	D 1-1
S., " 28	Reading H.	D 2-2
W., Oct. 2	Torquay U. H.	D 1-1
S., " 5	Northamp'n A.	W 2-1
S., " 12	Swindon T. H.	
S., " 19	Aldershot A.	
S., " 26	Plymouth A. H.	
S., Nov. 2	Port Vale A.	
S., " 9	Newport C. H.	
S., " 16	(1)	
S., " 23	Brighton H.	
S., " 30	Southend U. A.	
S., Dec. 7	(2) Q.P.R. H.	
S., " 14	Exeter City A.	
S., " 21	Norwich C. H.	
W., " 25	Brentford A.	
Th., " 26	Brentford H.	
S., " 28	Bournem'th A.	

1958	Opponents	Result
S., Jan. 4	(3) Watford A.	
S., " 11	Walsall H.	
S., " 18	Coventry C. A.	
S., " 25	(4) S'thamptn A.	
S., Feb. 1	Shrewsbury H.	
S., " 8	Reading A.	
S., " 15	(5) N'tham'n H.	
S., " 22	Swindon T. A.	
S., Mar. 1	(6) Aldershot H.	
S., " 8	Plymouth A. A.	
S., " 15	Port Vale H.	
S., " 22	Brighton A.	
S., " 29	Exeter C. H.	
Fri. Apr. 4	Colchester H.	
S., " 5	Newport C. A.	
Mon., " 7	Colchester A.	
S., " 12	Southend U. H.	
S., " 19	Q.P.R. A.	
W., " 23	Watford H.	
S., " 26	Southamptn. H.	
S., May 3	(Final)	

FOOTBALL COMBINATION

1957	Opponents	Result
S., Aug. 24	Cardiff City H.	W 1-0
W., " 28	Luton Town A.	L 0-4
S., " 31	Norwich C. A.	D 2-2
W., Sept. 4	Luton Town H.	W 7-1

S., " 7	Portsmouth H.	D 1-1
S., " 14	Coventry C. A.	D 1-1
S., " 21	Bournem'th H.	W 5-2
S., " 28	Chelsea A.	L 1-5
S., Oct. 5	Birmingham H.	L 1-3
S., " 12	West Ham A.	
S., " 19	Fulham H.	
S., " 26	Southend U. A.	
S., Nov. 2	Leicester C. H.	
S., " 9	Q.P.R. A.	
S., " 16	Brighton H.	
S., " 23	Swindon T. A.	
S., " 30	Millwall H.	
S., Dec. 7	Arsenal A.	
S., " 14	Aldershot H.	
S., " 21	Cardiff City A.	
W., " 25	Charlton H.	
Thu., " 26	Charlton A.	
S., " 28	Norwich C. H.	

1958	Opponents	Result
S., Jan. 4	Bristol City H.	
S., " 11	Portsmouth A.	
S., " 18	Coventry C. H.	
S., " 25	Bristol R. A.	
S., Feb. 1	Bournem'th A.	
S., " 8	Chelsea H.	
S., " 15	Birmingham A.	
S., " 22	West Ham H.	
S., Mar. 1	Fulham A.	
S., " 8	Southend U. H.	
S., " 15	Leicester C. A.	
S., " 22	Southampt'n H.	
S., " 29	Brighton A.	
Fri. Apr. 4	Ipswich T. A.	
S., " 5	Swindon T. H.	
Mon., " 7	Ipswich T. H.	
S., " 12	Millwall A.	
S., " 19	Arsenal H.	
S., " 26	Aldershot A.	
S., May 3	(Final)	

LONDON MID-WEEK LEAGUE

1957	Opponents	Result
W., Oct. 9	Charlton H.	L 0-2
W., " 16	Portsmouth H.	
W., " 23	Watford A.	
W., Nov. 6	Portsmouth A.	
Mon., " 11	West Ham A.	
W., " 20	Chelsea A.	
W., " 27	Arsenal H.	
Thu. Dec. 5	Tottenham A.	

1958	Opponents	Result
W., Feb. 19	West Ham H.	
W., " 26	Chelsea H.	
W., Mar. 12	Watford H.	
W., " 19	Charlton A.	
W., " 26	Arsenal A.	
W., Apr. 16	Tottenham H.	

You tried the rest - Now try the Best

Anywhere - Anytime - Any Number

Meet all your friends on

BOURNE & BALMER'S

COACHES

97 GEORGE STREET - CROYDON

Telephone: CROydon 3461 5 Lines

**ALDERSHOT Saturday, 19th October, leaving
Dingwall Road at 1 o'clock. FARE 6/6**

RECORDS

RECORDS

RECORDS

**ALL YOUR FAVOURITES HEARD
OVER THE LOUDSPEAKER CAN
BE OBTAINED AT**

Alders

OF CROYDON

Alders Ltd., North End to George St., Croydon. CRO 4477

SWINDON F.C.—Players Autographs

Sam Bentham

Harry Hunt

Jim Lee

Thomas Green

Johnston

Godfray

R. Edwards

Robert Perry

Alcock

A. Dargy

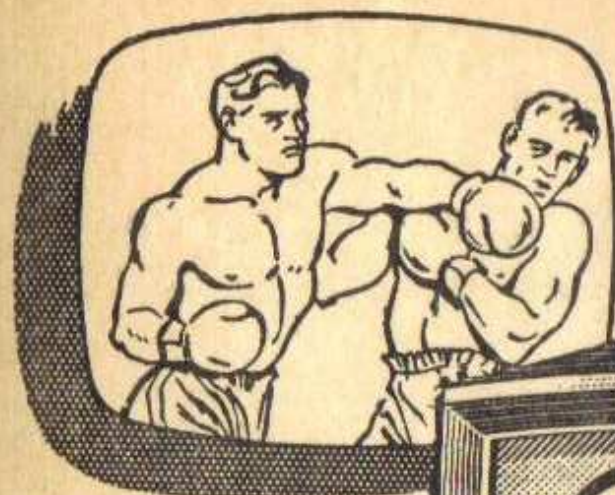
J. Veat

F. Skelli

L. Clayton

John Richards

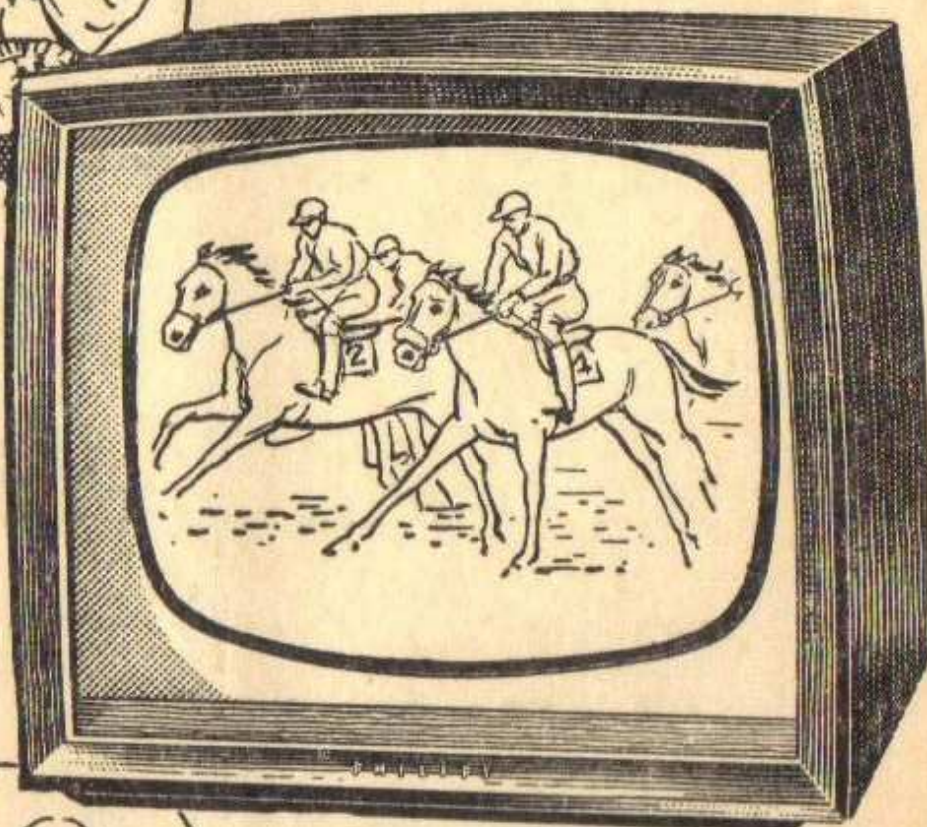
Here's the set for Sportsmen!



*-pictures with
all the detail*

Model 1768U

A highly functional, completely up-to-the-minute 17" television set with 90° deflection tube. This gives you a bigger picture from the same size tube. Picture quality is extra sharp, and the cabinet is in selected veneer, finished in a light shade with front wooden mouldings in contrasting shades. Price: 73 gns. tax paid.



In most sports, detail of movement is all-important – you don't want to miss a thing. That's why you must see a Philips model when choosing a TV set. Whatever the size of screen – 14", 17", 21" or 23" projection – Philips sets bring you crisp, clear pictures alive with *every* detail.



PHILIPS

The Dependable Television

PHILIPS ELECTRICAL LTD • CENTURY HSE • SHAFTESBURY AVE • WC2

(PR871)

THERE'S NOT
ENOUGH SPACE TO
WRITE ABOUT THE
'PALACE' HERE !
READ ALL ABOUT
THEM IN THE

Croydon
Advertiser

Every Friday

Price 3d.